

MONTHLY MEMBERSHIP PROGRESS REPORT

District 322 B2

Results as of: 9/30/2023

GMT:

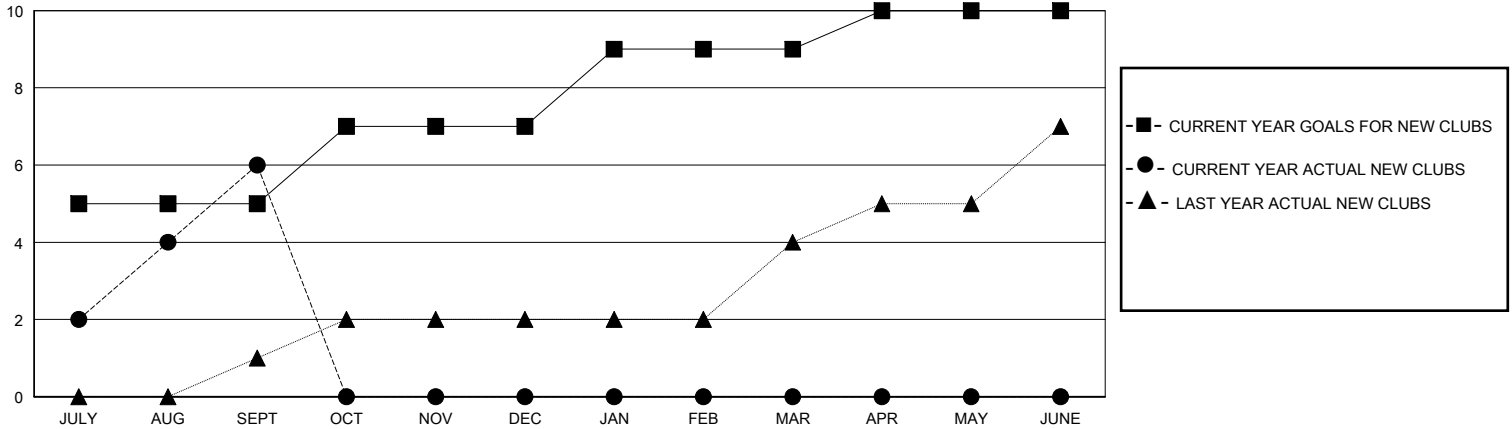
LOCATION INDIA

GMT CA

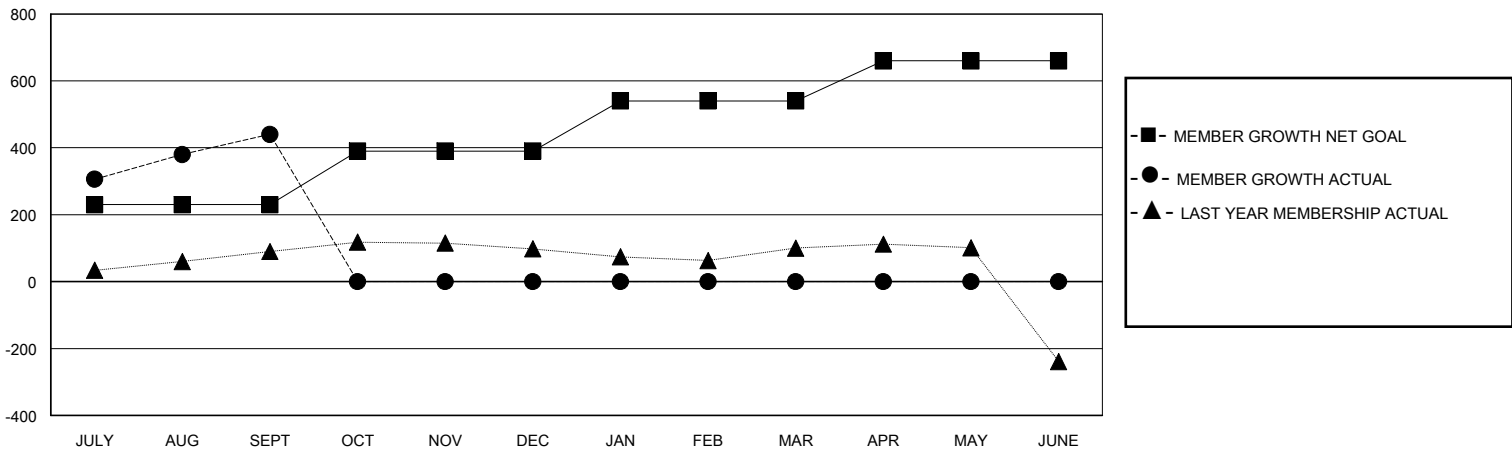
Clubs			
RESULTS FOR 2023-2024			
QUARTER	NEW CLUB GOAL	NEW CLUBS	DROPPED CLUBS
JULY/AUG/SEPT	5	6	1
OCT/NOV/DEC	2	0	0
JAN/FEB/MAR	2	0	0
APR/MAY/JUNE	1	0	0

Members			
RESULTS FOR 2023-2024			
QUARTER	MEMBER GROWTH NET GOAL	MEMBER GROWTH ACTUAL	DROPPED MEMBERS ACTUAL (including transfers)
JULY/AUG/SEPT	230	508	59
OCT/NOV/DEC	160	0	0
JAN/FEB/MAR	150	0	0
APR/MAY/JUNE	120	0	0

GOALS AND ACTUAL NEW CLUBS CUMULATIVE



GOALS AND ACTUAL MEMBERS CUMULATIVE



DROPPED CLUBS: 1	53 CLUBS OF 82 ADDED 1 OR MORE NEW MEMBERS	<u>GENDER DISTRIBUTION</u>	
		MALE	2,222 (70.36%)
		FEMALE	936 (29.64%)
<u>DROPPED MEMBERS</u>		TOTAL FAMILY UNIT MEMBERS 1,512	
DECEASED	4	FAMILY MEMBERS PAYING HALF DUES 936	
CLUB CANCELLED	0		
OTHER	55		
TOTAL	59		

[CLICK HERE FOR CUMULATIVE MEMBERSHIP DATA](#)